



XCELLHASH USER'S GUIDE

THE CONTENT OF THIS DOCUMENT IS PROVIDED "AS IS" WITHOUT WARRANTY OF ANY KIND, WHETHER EXPRESS, IMPLIED, OR STATUTORY. THE ENTIRE RISK AS TO THE QUALITY, CORRECTNESS, ACCURACY, OR COMPLETENESS OF THE CONTENT OF THIS DOCUMENT IS WITH YOU. IN NO EVENT WILL ANY AUTHOR OF THE SOFTWARE OR DOCUMENTATION, OR ANY APPLICABLE COPYRIGHT OWNER, OR ANY OTHER PARTY WHO MAY COPY AND/OR (RE)DISTRIBUTE THIS SOFTWARE OR DOCUMENTATION, BE LIABLE TO YOU OR TO ANY OTHER PARTY FOR ANY DAMAGES, INCLUDING, BUT NOT LIMITED TO, ANY DIRECT, INDIRECT, GENERAL, SPECIAL, INCIDENTAL, PUNITIVE, EXEMPLARY, OR CONSEQUENTIAL DAMAGES (INCLUDING, BUT NOT LIMITED TO, CORRUPTION OR LOSS OF DATA, ANY LOSSES SUSTAINED BY YOU OR THIRD PARTIES, A FAILURE OF THIS SOFTWARE TO OPERATE WITH ANY OTHER PRODUCT, PROCUREMENT OF SUBSTITUTE GOODS OR SERVICES, OR BUSINESS INTERRUPTION), WHETHER IN CONTRACT, STRICT LIABILITY, TORT (INCLUDING, BUT NOT LIMITED TO, NEGLIGENCE) OR OTHERWISE, ARISING OUT OF THE USE, COPYING, MODIFICATION, OR (RE)DISTRIBUTION OF THIS SOFTWARE OR DOCUMENTATION (OR A PORTION THEREOF), OR INABILITY TO USE THIS SOFTWARE OR DOCUMENTATION, EVEN IF SUCH DAMAGES (OR THE POSSIBILITY OF SUCH DAMAGES) ARE/WERE PREDICTABLE OR KNOWN TO ANY (CO)AUTHOR, COPYRIGHT/TRADEMARK OWNER, OR ANY OTHER PARTY. BY INSTALLING, RUNNING, USING, COPYING, (RE)DISTRIBUTING, AND/OR MODIFYING THIS SOFTWARE, INCLUDING, BUT NOT LIMITED TO, ITS DOCUMENTATION, OR A PORTION THEREOF, YOU ACCEPT AND AGREE TO BE BOUND BY ALL TERMS AND CONDITIONS OF THE XCELLHASH LICENSE THE FULL TEXT OF WHICH IS CONTAINED IN THE FILE `eula.txt` INCLUDED IN XCELLHASH BINARY DISTRIBUTION PACKAGE.

V2.0

2/3/2013

xCELLHASH USER'S GUIDE

1. INTRODUCTION

This document describes how to install and use xCELLhash software for use with Microsoft® Office Excel® 2007, Excel® 2010, and Excel® 2013 32-bit and 64-bit versions.

xCELLhash is an Add-In that allows users to perform one-way hash functions (e.g. MD5, SHA-1, SHA-2) on data stored in Microsoft® Office Excel® workbooks. xCELLhash implements the MD5, SHA-1, SHA-256, SHA-384, and SHA-512 algorithms and returns data as hexadecimal strings. Microsoft's® cryptographic service provider (CryptoAPI) is utilized to make the hashing features available. User's may hash data by clicking on the appropriate button on the FSS Tools / xCELLhash Ribbon or by selecting the desired formula from the 'Insert Function' dialog.

This software has been successfully tested on the Microsoft® Windows® XP SP3, Windows® 7, and Windows® 8 (32-bit and 64-bit versions) operating systems.

WARNING: *Hashing data is a destructive process and cannot be undone. To prevent data loss, you should maintain a copy of your data.*

2. INSTALLATION

- a) Download the xCELLhash Setup program from the FullScope Solutions website (<http://www.fullscopesolutions.com/software/>) or from one of the approved distributors (e.g. Microsoft® Marketplace, CNET®, etc.)
- b) Close all instances of Microsoft® Office Excel® and uninstall any previous versions of xCELLhash.
- c) Unzip and Run 'xhSetup.exe'. *Note that if User Account Control is enabled on your computer (default setting on Microsoft® Windows Vista, Windows 7, and Windows 8), you will be prompted to allow the Setup program to execute, and may need to enter an administrator level password to complete installation of the software.*
- d) Check the box to certify that you have read and agree to the Software License Terms and click the "Go" button to complete installation (*Figure 2-1*). If Setup does not encounter any errors, you will be presented with a message box indicating that xCELLhash has been successfully installed. *Note that Microsoft® Windows 7 and 8 may question whether the program completed installation successfully; you should select that it has completed successfully unless you were advised of an error by the Setup program.*



Figure 2-1 – xCELLhash Setup

- e) Should you encounter issues during setup, you will be presented with an error message and code that can assist our support team with isolating your problem. Additionally, a file named 'INSTALL_LOG.txt' will be generated and, depending on your computer configuration, can be located in the 'c:\programdata\FSS' folder on Windows 7 and Windows 8 systems or the 'c:\Documents and Settings\All Users\Application Data\FSS' folder on Windows XP systems. Please email this file along with your specific error message and code when requesting support.

3. USAGE

After successful installation and upon opening Microsoft® Office Excel®, you will have a new Tab on the Ribbon entitled 'FSS Tools'. Selecting this Tab will display the xCELLhash user interface. *Figure 3-1* depicts the Tab and user interface.

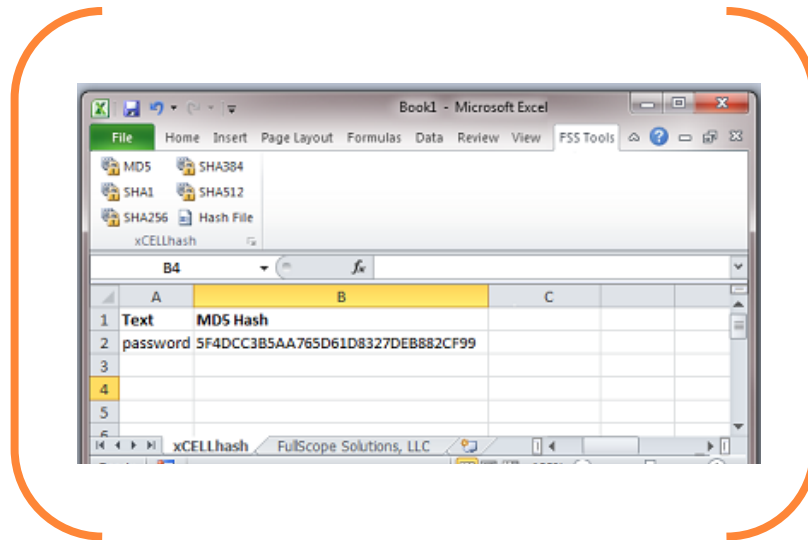


Figure 3-1 – xCELLhash Tab & UI

You will also have a new function category, *xCELLhash.connect*, in your Insert Function dialog. This new category contains functions that allow you to perform hashing operations on cell data and function like other formulas (e.g. =_MD5(A1) will MD5 hash data contained in cell A1). *Figure 3-2* shows the Insert Function Dialog with the new functions.

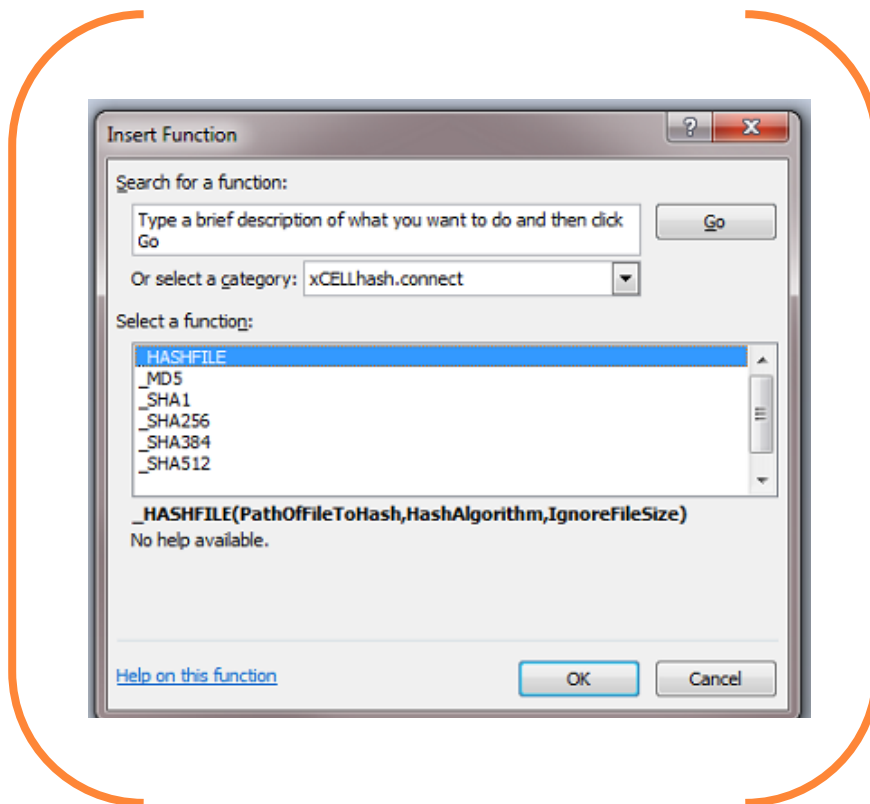


Figure 3-2 – Insert Function Dialog

3.1 Hashing Data

To hash data, select the cell(s) you want to hash and click the button for the hash algorithm you desire (e.g. “MD5” button, “SHA-1” button, etc.).

The data in all selected cells will be hashed utilizing the selected algorithm and the resulting text will **replace** the data previously contained in the cell(s). See *Figure 3-3*.

Alternatively you may use a formula to calculate the hash of data contained in a selected cell. This allows you to place the result in a cell of your choice and does not overwrite the original data.

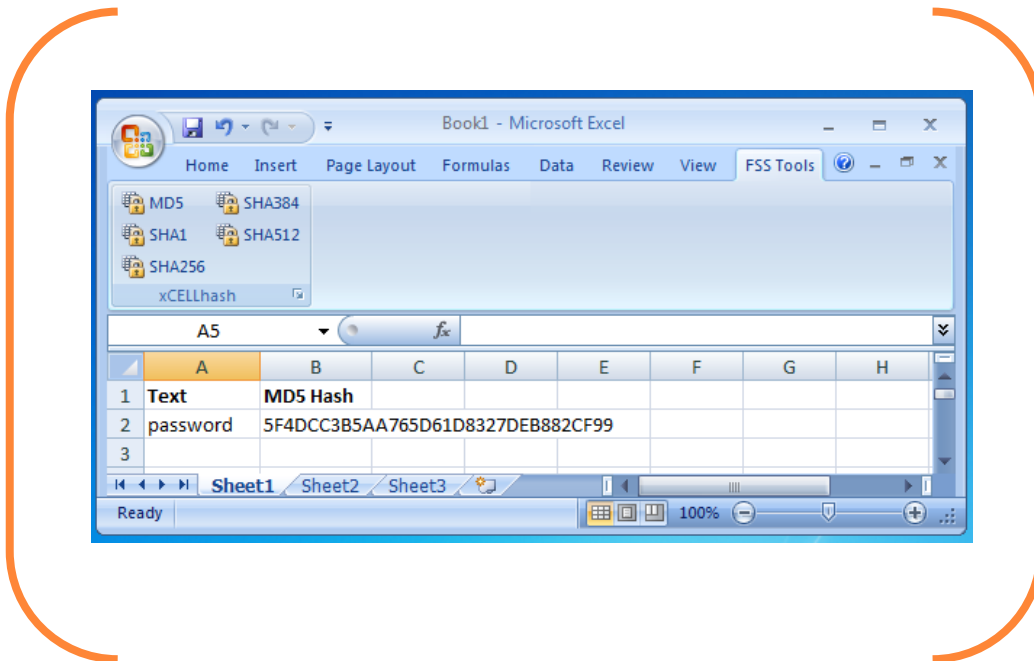


Figure 3-3 – xCELLhash Example

If cells are selected that do not contain data, xCELLhash will ignore them during the hashing process.

3.2 Hashing Files

To hash a file, select an empty cell for the results to be placed in and click the “Hash File” button.

A new window will appear that will allow you to browse to the file you want to hash and select the hash algorithm to apply. After selecting a file and an algorithm, click the “Go” button to perform the hashing operation.

Alternatively you may use a formula to calculate the hash of a file. You can, for example, enter a file path in cell A1, and then enter the following formula in cell B1: `=_HASHFILE(A1,"MD5")` to get the MD5 hash of the file referenced by the path in cell A1.

4. LICENSE PURCHASE & REGISTRATION

xCELLhash offers a limited trial period whereby you can evaluate the product's performance over 15 hashing actions. After the trial period has expired, you must purchase a license in order to continue to use the product.

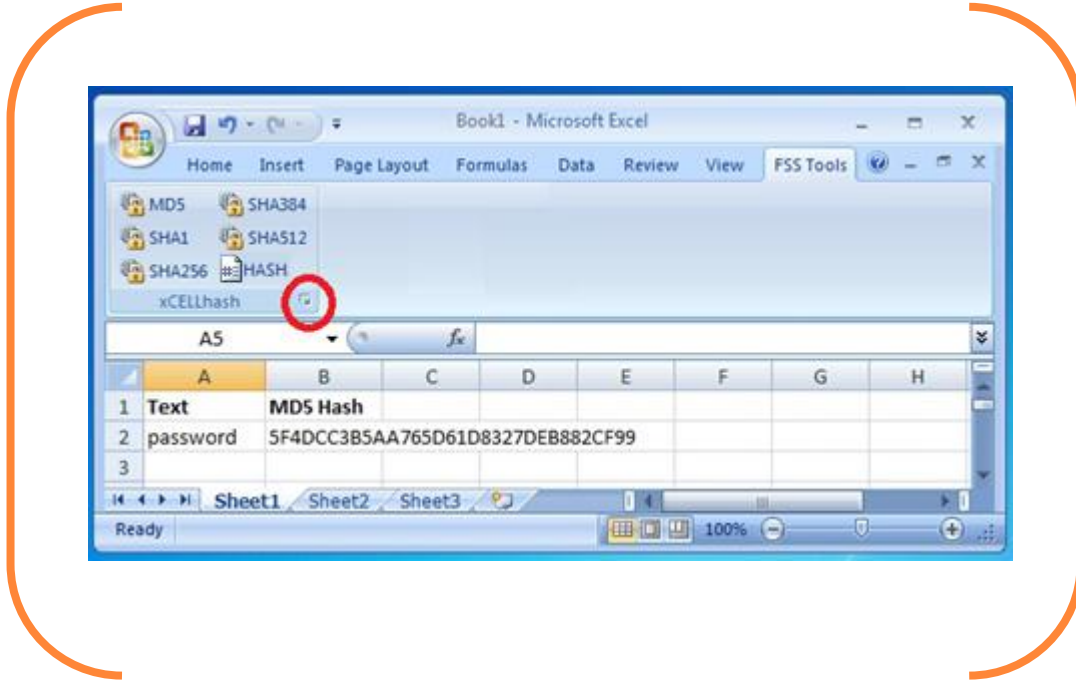


Figure 4-1 – xCELLhash Registration

Follow the “Buy Now” link on our website, or click the “Buy Now” button on the “About xCELLcolor” dialog, *Figure 4-2*, to be taken directly to PayPal and purchase your license. Upon confirmation of payment from PayPal, we will email you a license file, typically within 30 minutes, and your Transaction ID. Use the “Save As” feature of your email program to save the license file to your computer.



Figure 4-2 – About xCELLhash

Open Microsoft® Office Excel® and with the “About xCELLcolor” dialog displayed, click the “Activate” button found in “Step 3” (*Figure 4-2*). A file browser will open up titled "Select License file." and you should browse to and select your license file. Once you have selected the file, click "Open". You will be asked to enter your 17 character Transaction ID, *Figure 4-3*, as the final step of the activation process.

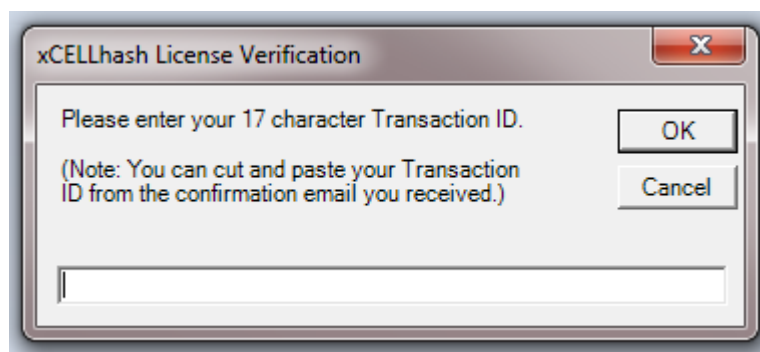


Figure 4-3 – xCELLhash Activation

Upon entering a valid Transaction ID a message box will display indicating successful activation of your software and you will be instructed to restart Excel®, *Figure 4-4*. If an active Internet connection is found, xCELLcolor will register your installation with our company server. The only data that is provided to our server is an encrypted unique identifier and your encrypted Transaction ID

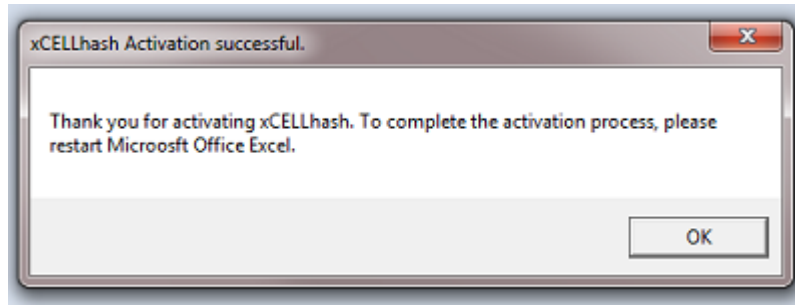


Figure 4-4 – xCELLhash Activation Success



Figure 4-5 – xCELLhash Activated

4.1 - Automated Activation Instructions

Enterprise license holders or anyone wishing to automate the installation and activation process may do the following:

1. Place your valid license file in the same folder as the xCELLcolor Setup program (xcSetup.exe) and name the license file, "license.xml".
2. Use Notepad, or another text editor, to create a text file named "TID.txt" and enter your 17 character Transaction ID into this file. Save this file in the same folder as the Setup program (xcSetup.exe) and the license file (license.xml),
3. Run the Setup program and your software will install and automatically activate.

5. REPAIR / UNINSTALL

If errors are encountered during the use of xCELLhash you may attempt a repair by launching the Setup program and selecting "Repair/Re-install xCELLhash".

Should you desire to uninstall the product, you may do so by launching the Setup program and selecting "Uninstall xCELLhash".

A copy of the Setup program will be located in 'c:\programdata\FSS' on Windows Vista, 7, and 8 systems and 'c:\Documents and Settings\All Users\Application Data\FSS' folder on Windows XP systems.

You may also use the Microsoft® Windows Control Panel to uninstall xCELLhash.

After the uninstall process is completed, you may need to manually delete some files.

6. SUPPORT

Please contact <info@FullScopeSolutions.com> with any support needs.