

Full
SOLUTIONS, LLC
www.fullscopesolutions.com



XCELLRECOVER USER'S GUIDE

THE CONTENT OF THIS DOCUMENT IS PROVIDED "AS IS" WITHOUT WARRANTY OF ANY KIND, WHETHER EXPRESS, IMPLIED, OR STATUTORY. THE ENTIRE RISK AS TO THE QUALITY, CORRECTNESS, ACCURACY, OR COMPLETENESS OF THE CONTENT OF THIS DOCUMENT IS WITH YOU. IN NO EVENT WILL ANY AUTHOR OF THE SOFTWARE OR DOCUMENTATION, OR ANY APPLICABLE COPYRIGHT OWNER, OR ANY OTHER PARTY WHO MAY COPY AND/OR (RE)DISTRIBUTE THIS SOFTWARE OR DOCUMENTATION, BE LIABLE TO YOU OR TO ANY OTHER PARTY FOR ANY DAMAGES, INCLUDING, BUT NOT LIMITED TO, ANY DIRECT, INDIRECT, GENERAL, SPECIAL, INCIDENTAL, PUNITIVE, EXEMPLARY, OR CONSEQUENTIAL DAMAGES (INCLUDING, BUT NOT LIMITED TO, CORRUPTION OR LOSS OF DATA, ANY LOSSES SUSTAINED BY YOU OR THIRD PARTIES, A FAILURE OF THIS SOFTWARE TO OPERATE WITH ANY OTHER PRODUCT, PROCUREMENT OF SUBSTITUTE GOODS OR SERVICES, OR BUSINESS INTERRUPTION), WHETHER IN CONTRACT, STRICT LIABILITY, TORT (INCLUDING, BUT NOT LIMITED TO, NEGLIGENCE) OR OTHERWISE, ARISING OUT OF THE USE, COPYING, MODIFICATION, OR (RE)DISTRIBUTION OF THIS SOFTWARE OR DOCUMENTATION (OR A PORTION THEREOF), OR INABILITY TO USE THIS SOFTWARE OR DOCUMENTATION, EVEN IF SUCH DAMAGES (OR THE POSSIBILITY OF SUCH DAMAGES) ARE/WERE PREDICTABLE OR KNOWN TO ANY (CO)AUTHOR, COPYRIGHT/TRADEMARK OWNER, OR ANY OTHER PARTY. BY INSTALLING, RUNNING, USING, COPYING, (RE)DISTRIBUTING, AND/OR MODIFYING THIS SOFTWARE, INCLUDING, BUT NOT LIMITED TO, ITS DOCUMENTATION, OR A PORTION THEREOF, YOU ACCEPT AND AGREE TO BE BOUND BY ALL TERMS AND CONDITIONS OF THE XCELLRECOVER LICENSE THE FULL TEXT OF WHICH IS CONTAINED IN THE FILE eula.txt INCLUDED IN XCELLRECOVER BINARY DISTRIBUTION PACKAGE.

v1.1

2/1/2013

xCELLRECOVER USER'S GUIDE

1. INTRODUCTION

This document describes how to install and use the xCELLrecover software for use with Microsoft® Office Excel® 2007, Excel® 2010, and Excel® 2013 32-bit and 64-bit versions.

xCELLrecover an Add-In that allows users to recover (unprotect) password protected workbooks and worksheets for Excel® 2007, Excel® 2010, and Excel® 2013. xCELLrecover removes the protection vice returning the password and allows user's to recover their work. Beginning with Excel® 2013 the workbook and worksheet default protection algorithm was enhanced rendering many of the macro techniques traditionally used to recover workbooks and worksheets useless. xCELLrecover CAN successfully recover protected Excel® 2013 workbooks and worksheets.

At this time, xCELLrecover DOES NOT recover Excel® files that require a password to Open or Modify the “.xlsx” file.

This software has been successfully tested on the Microsoft® Windows® XP SP3, Windows® 7, and Windows® 8 (32-bit and 64-bit versions) operating systems.

2. INSTALLATION

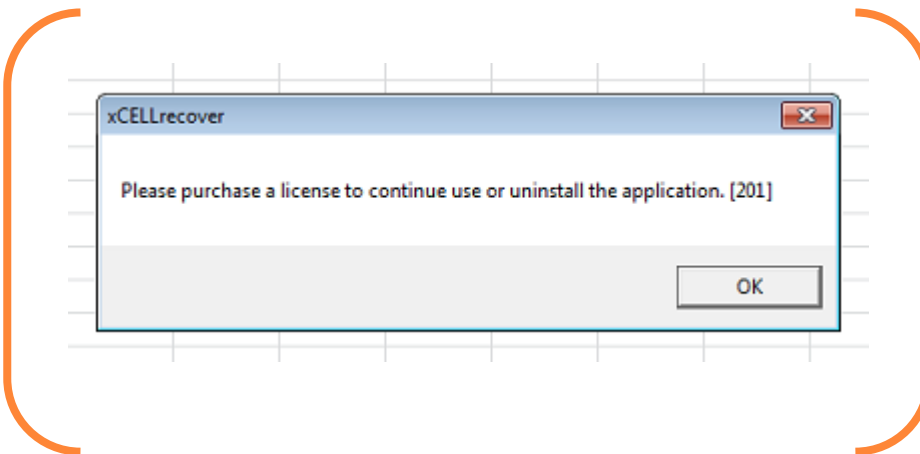
- a) Download the xCELLrecover Setup program from the FullScope Solutions website (<http://www.fullscopesolutions.com/software/>) or from one of the approved distributors (e.g. CNET®, Softpedia®, etc.)
- b) Close all instances of Microsoft® Office Excel® and uninstall any previous versions of xCELLrecover.
- c) Unzip and Run ‘xrSetup.exe’. *Note that if User Account Control is enabled on your computer (default setting on Microsoft® Windows Vista, Windows 7, and Windows 8), you will be prompted to allow the Setup program to execute, and may need to enter an administrator level password to complete installation of the software.*
- d) Check the box to certify that you have read and agree to the Software License Terms and click the “Go” button to complete installation (*Figure 2-1*). If Setup does not encounter any errors, you will be presented with a message box indicating that xCELLrecover has been successfully installed. *Note that Microsoft® Windows 7 and 8 may question whether the program completed installation successfully; you should select that it has completed successfully unless you were advised of an error by the Setup program.*

- e) Should you encounter issues during setup, you will be presented with an error message and code that can assist our support team with isolating your problem. Additionally, a file named 'INSTALL_LOG.txt' will be generated and, depending on your computer configuration, can be located in the 'c:\programdata\FSS' folder on Windows 7 and Windows 8 systems or the 'c:\Documents and Settings\All Users\Application Data\FSS' folder on Windows XP systems. Please email this file along with your specific error message and code when requesting support.



Figure 2-1 – xCELLrecover Setup

- f) xCELLrecover does not offer a trial period. As such, after successful installation, and upon opening Microsoft® Office Excel®, a message box will advise you that a license is required to use the product (*Figure 2-2*).



Microsoft and the Office logo are trademarks or registered trademarks of Microsoft Corporation in the United States and/or other countries.

Figure 2-2 – xCELLrecover License Notice

You will then be presented with the “About xCELLrecover” dialog (*Figure 2-3*), where you may click the “Buy Now” button to purchase a license or the “Activate” button if you are in possession of a license file. See Section 4.0 for more details on purchase and activation.

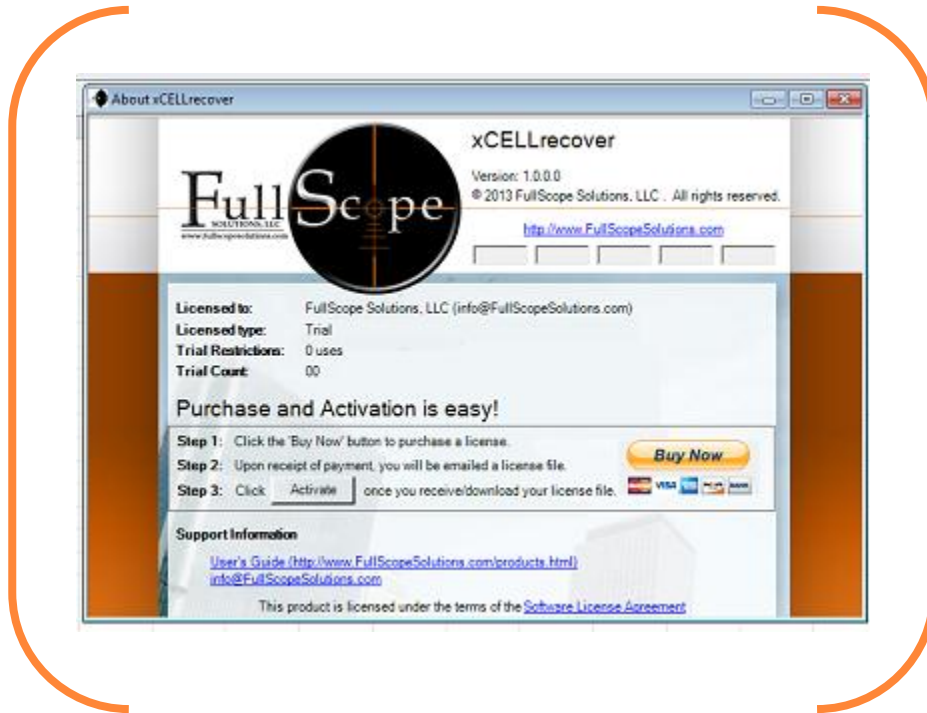


Figure 2-3 – About xCELLrecover

You may close the “About xCELLrecover” dialog and use Microsoft® Office Excel® normally; however, xCELLrecover will not be available for use until you activate the product with a valid license. Each time you open Microsoft® Office Excel®, you will be presented with the message box and dialog until you activate or uninstall the application.

3. USAGE

After successful installation, activation, and upon opening Microsoft® Office Excel®, you will have a new Tab on the Ribbon entitled ‘FSS Tools’ with two buttons. *Figure 3-1* depicts the Tab and user interface.

3.1 – Recover / Unprotect a Worksheet

1. Open the Excel® file with the protected worksheet(s) and select the worksheet you wish to recover.
2. From the “FSS Tools” tab, click the “Unprotect Worksheet” button.

3. You may choose “Save As” to create a new, recovered, document or “Save” to overwrite the original file.

Note: If the Excel® file was protected using Excel® 2013, a copy of the unprotected file will be placed on your desktop and your original file will remain in tact.

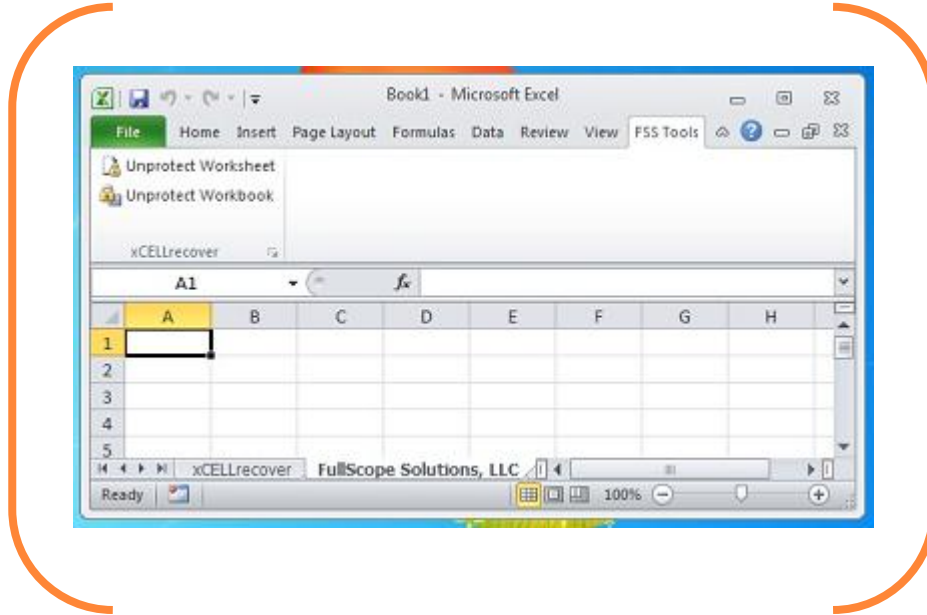


Figure 3-1 – xCELLrecover Tab & UI

3.2 - Recover / Unprotect Workbook

1. Open the Excel® file with the protected workbook.
2. From the “F55 Tools” tab, click the “Unprotect Workbook” button.
3. You may choose “Save As” to create a new, recovered, document or “Save” to overwrite the original file.

Note: If the Excel® file was protected using Excel® 2013, a copy of the unprotected file will be placed on your desktop and your original file will remain in tact.

4. LICENSE PURCHASE/REGISTRATION & ACTIVATION

Follow the “Buy Now” link on our website, or click the “Buy Now” button on the “About xCELLrecover” dialog, *Figure 2-3*, to be taken directly to PayPal and purchase your license. Upon confirmation of payment from PayPal, we will email you a license file, typically within 30 minutes, and your Transaction ID. Use the “Save As” feature of your email program to save the license file to your computer.

Open Microsoft® Office Excel® and with the “About xCELLrecover” dialog displayed, click the “Activate” button found in “Step 3” (*Figure 2-3*). A file browser will open up titled "Select License file." and you should browse to and select your license file. Once you have selected the file, click "Open". You will be asked to enter your 17 character Transaction ID, *Figure 4-1*, as the final step of the activation process.

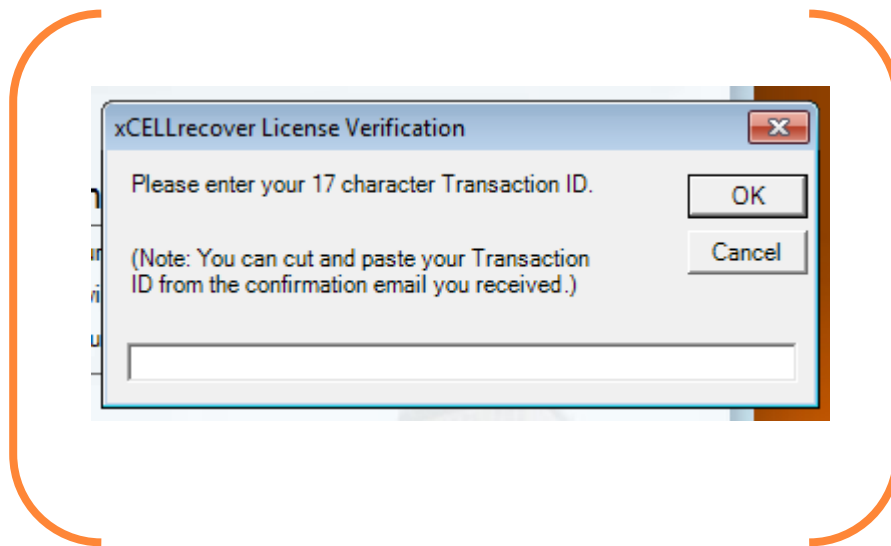


Figure 4-1 – xCELLrecover Activation

Upon entering a valid Transaction ID a message box will display indicating successful activation of your software and you will be instructed to restart Excel®, *Figure 4-2*. If an active Internet connection is found, xCELLrecover will register your installation with our company server. The only data that is provided to our server is an encrypted unique identifier and your encrypted Transaction ID.

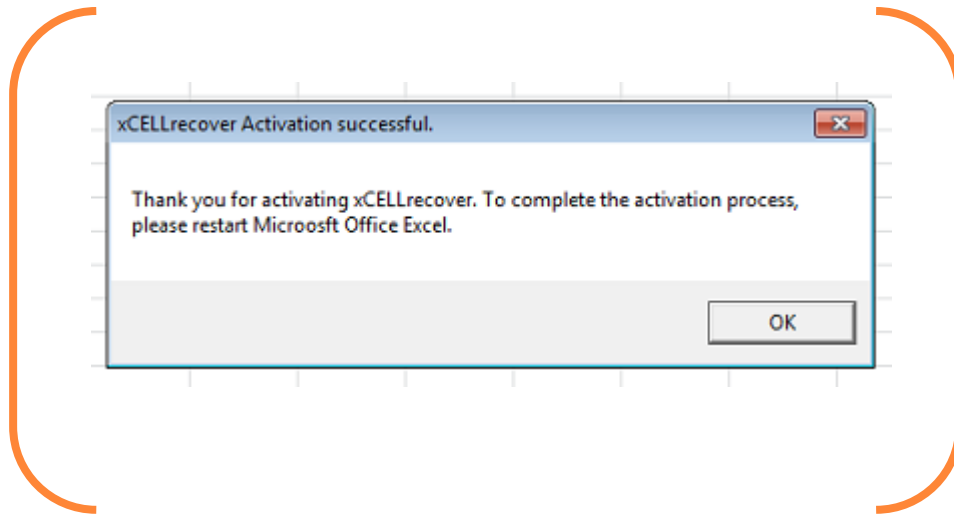


Figure 4-2 – xCELLrecover Activation Success



Figure 4-3 – xCELLrecover Activated

4.1 - Automated Activation Instructions

Enterprise license holders or anyone wishing to automate the installation and activation process may do the following:

1. Place your valid license file in the same folder as the xCELLrecover Setup program (xrSetup.exe) and name the license file, "license.xml".
2. Use Notepad, or another text editor, to create a text file named "TID.txt" and enter your 17 character Transaction ID into this file. Save this file in the same folder as the Setup program (xrSetup.exe) and the license file (license.xml),
3. Run the Setup program and your software will install and automatically activate.

5. REPAIR / UNINSTALL

If errors are encountered during the use of xCELLrecover you may attempt a repair by launching the Setup program and selecting "Repair/Re-install xCELLrecover".

Should you desire to uninstall the product, you may do so by launching the Setup program and selecting "Uninstall xCELLrecover".

A copy of the Setup program will be located in 'c:\programdata\FSS' on Windows Vista, 7, and 8 systems and 'c:\Documents and Settings\All Users\Application Data\FSS' folder on Windows XP systems.

You may also use the Microsoft® Windows Control Panel to uninstall xCELLrecover.

After the uninstall process is completed, you may need to manually delete some files.

6. SUPPORT

Please contact <info@FullScopeSolutions.com> with any support needs.